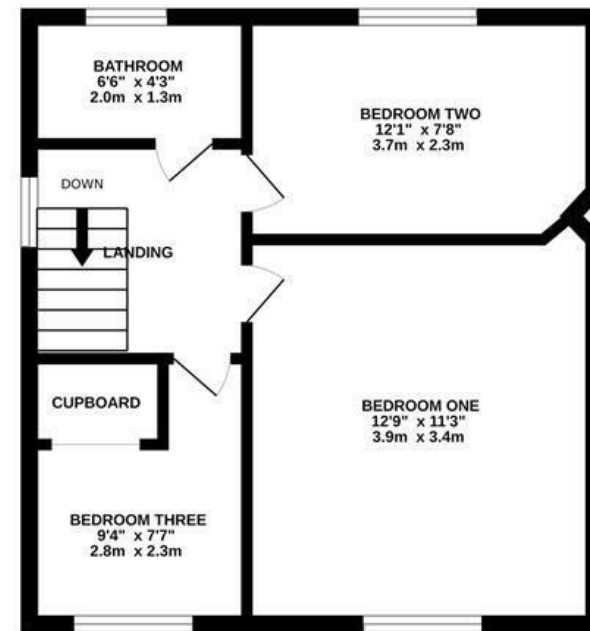
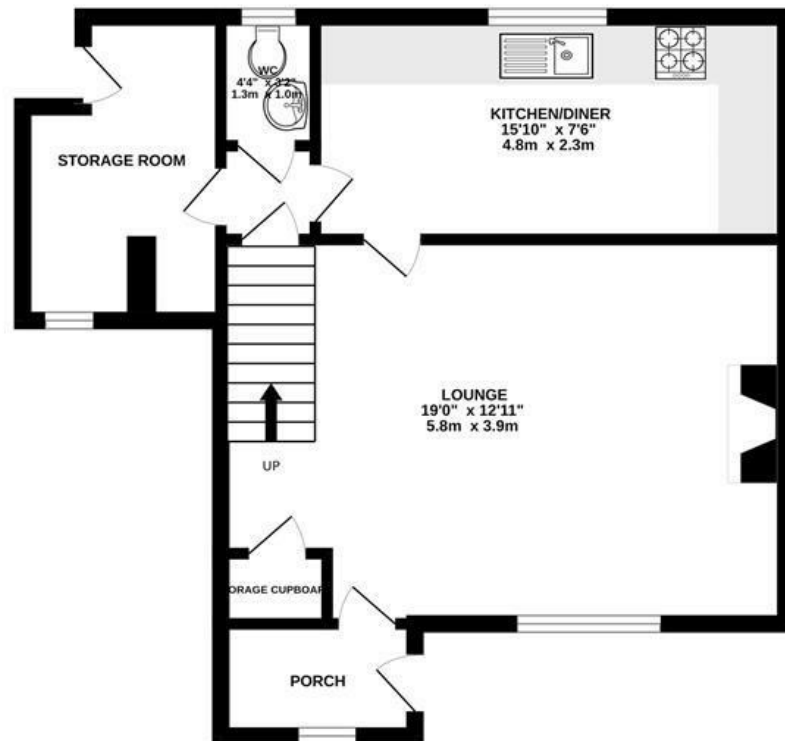


# Minehead Road

## KNOWLE

APPROXIMATE FLOOR AREA  
79 SQM / 852 SQFT



Illustrations are for reference purposes only,  
measurements are approximate, not to scale.

Boardwalk

# Minehead Road , BRISTOL



£295,000



3 Bedrooms



Bristol, BS4

1RN



2 Bathrooms

*"We have loved this home! The street is peaceful and neighbours are friendly, the garden is a sun trap and having Redcatch Park so nearby has been amazing, especially with the pop-up kitchens available in the Spring and Summer months."*

